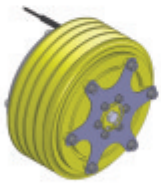


CLIMABUSS



Climabuss Clutch Assembly

CK58 e CK65



Climabuss Clutch for
CK58 and CK65
compressors - [70900001](#)



Coil

70900017



Pulley and bearing assembly

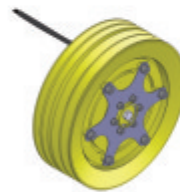
77400084



Clutch Coupling

70900005

Similar - Carrier Reto



Climabuss Clutch for
Carrier Reto
compressor - [70900015](#)



Coil

70900008



Pulley and bearing assembly

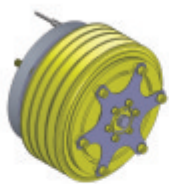
77400248



Clutch Coupling

70900025

Similar - Bitzer / Bock / Recrusul



Climabuss Clutch for
Bitzer, Bock and Recrusul
compressors - [70900004](#)



Bitzer Adaptor

10400020



Coil

70900017



Pulley and bearing assembly

77400084



Clutch coupling

70900024

Similar - Thermo King 7. 1/2"



Climabuss Clutch for
Thermo King 7. 1/2"
compressor - [70900009](#)



Coil

70900011



Pulley and bearing assembly

77400249



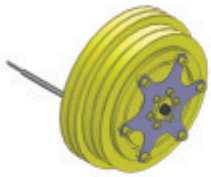
Clutch coupling

70900026

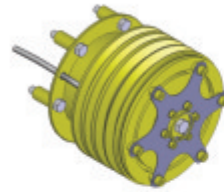
Climabuss Clutch Assemblies

Similar - Denso

Similar - Thermo King 9



Climabuss Clutch for Thermo King 9 compressors - 70900012



Climabuss Clutch for Denso compressor - 70900018



Coil 70900002



Coil 70900019



Pulley and bearing assembly 77400250



Bearing 10900041



Clutch coupling 70900027



Pulley and bearing assembly 77400252



Clutch coupling 70900028

Similar - Carrier Escalonada

Compressors



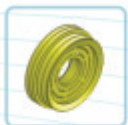
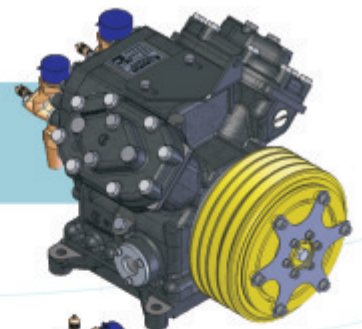
Climabuss Clutch for Carrier Escalonada compressors - 70900016

Climabuss CK58 Compressor 70500003



Coil 70900008

575 cm³
POE Oil (1,6 Liters)
4 Cylinders



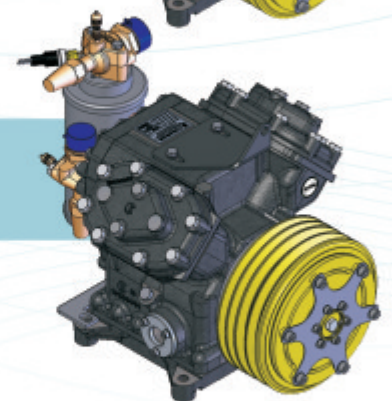
Pulley and bearing assembly 77400251

Climabuss CK65 Compressor 70500020



Clutch coupling 70900025

650 cm³
POE Oil (1,6 Liters)
4 Cylinders



Ck58 and Ck65 Compressors

- High performance;
- Do not use an oil pump. Lubrification occurs through sprinkling from the crankshaft /piston rods;
- Easy and low cost maintenance;
- R134a gas.

